

1. PERFORMANCE

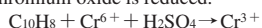
- 1) Measuring range : 10-100 ppm
- Number of pump strokes : 1 (100ℓ)
- 2) Sampling time : 1.5 minutes/1 pump stroke
- 3) Detectable limit : 2ppm
- 4) Shelf life : 1 year
- 5) Operating temperature : 0 ~ 40 °C
- 6) Temperature compensation : Necessary (See "TEMPERATURE CORRECTION TABLE")
- 7) Reading : Graduations printed on the tube are calibrated by Isobutyl acetate at 1 pump stroke and Naphthalene is determined by using a conversion chart at pump strokes.
- 8) Colour change : Pale yellow → Blackish brown

2. RELATIVE STANDARD DEVIATION

RSD-low : 10% RSD-mid. : 5% RSD-high : 5%

3. CHEMICAL REACTION

Chromium oxide is reduced.



4. CALIBRATION OF THE TUBE

VAPOUR PRESSURE METHOD

5. INTERFERENCE AND CROSS SENSITIVITY

Substance	Interference	Coexistence
Methanol FIG.1	Pale blue stain is produced.	Higher readings are given.
Butyl acetate	∕	∕
Aromatic hydrocarbons FIG.2	Brown stain is produced.	∕
Aliphatic hydrocarbons (more than C ₃)	∕	∕
Esters	∕	∕

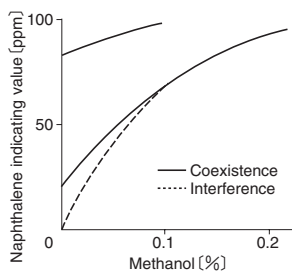


FIG.1 Influence of Methanol

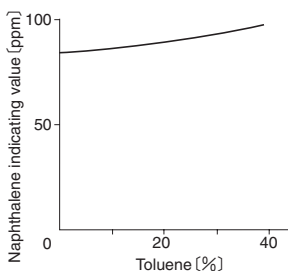


FIG.2 Influence of Toluene

