

Characteristics

■ Excellent reproducibility and simple operation

Connect the NeedlEx to the Model AP-20/AP-20N Aspirating Pump and collect sample gas.
You can extract the target compounds selectively in a short time.

■ Good keeping quality

NeedlEx can keep extracted gases for about **10** days with putting teflon plugs to the both ends.

■ No costly special tools required for adsorption/desorption in extraction

Heat at the injection port of gas chromatograph can be used for the desorption of extracted gas.

■ Reusable

NeedlEx can be reused about **25-30** times with 3 minutes conditioning.

Gases to be extracted with the NeedlEx

■ For Organic solvent

Standard organic solvents such as Ethyl acetate, Isobutyl alcohol, Methyl isobutyl ketone, Toluene, Xylene, Styrene, etc.

■ For Trimethylamine

Lower amines such as Trimethylamine

■ For Fatty acid

Fatty acids such as Propionic acid, Isobutyric acid, n-Butyric acid and Isovaleric acid

(Filling polymer is high heat-proof for the adsorbing ability and the heat desorbing of fatty acid)



3 pcs/box

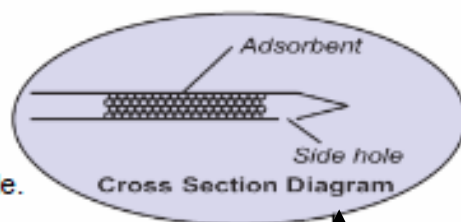


Connecting with
the aspirating pump

Specification

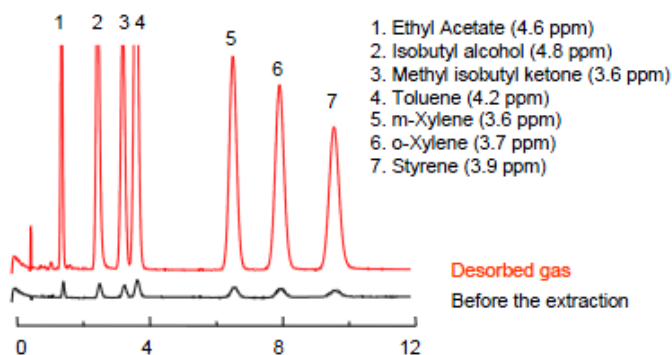
Inner diameter : 0.5 mm
Outer diameter : 0.7 mm
Length : 85 mm
Volume of filling : ca. 6 μ L *

* Filling length is about 30 mm back from the side hole.



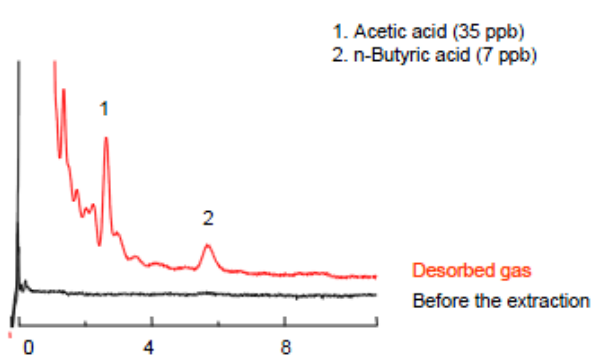
APPLICATION CHROMATOGRAM

Standard organic solvents
(20 mL sampling)



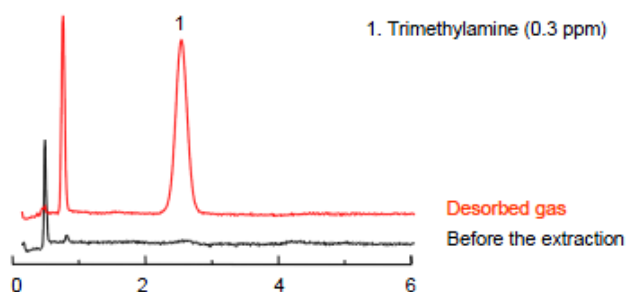
Column : 12 % SBS-120 on SHINCARBON A 80/100
Glass 3 m x 3 mm I.D.
Oven : 120 °C
Injector : 200 °C
Carrier : Nitrogen at 50 mL/min
Detector : FID

Fatty acid in head space gas of shoes
(300 mL sampling)

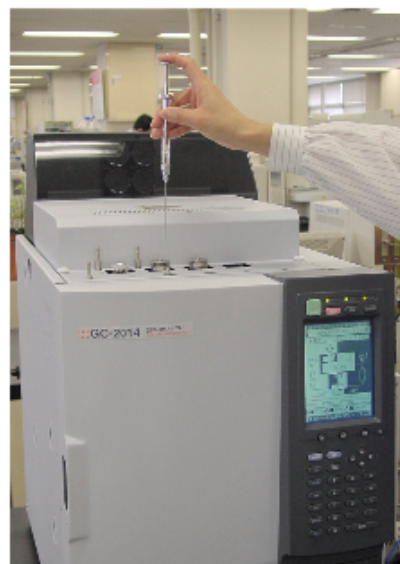


Column : 5 % Thermon-3000 on SHINCARBON A 60/80
Glass 1.5 m x 3 mm I.D.
Oven : 120 °C
Injector : 250 °C
Carrier : Nitrogen at 60 mL/min
Detector : FID

Trimethylamine in head space gas of dry fowl droppings
(100 mL sampling)



Column : 5+1 % Thermon-3000+KOH on Sunpak-N
Glass 1.5 m x 3 mm I.D.
Oven : 120 °C
Injector : 250 °C
Carrier : Nitrogen at 50 mL/min
Detector : FID



Accessory

Name	Q' ty	Notes
Model AP-20 Aspirating Pump	1 set	Sampling volumes are 50 mL and 100 mL.
Gas-tight syringe	1 pc	SGE luer lock type (Volume is 1 mL).



KITAGAWA aspirating pump